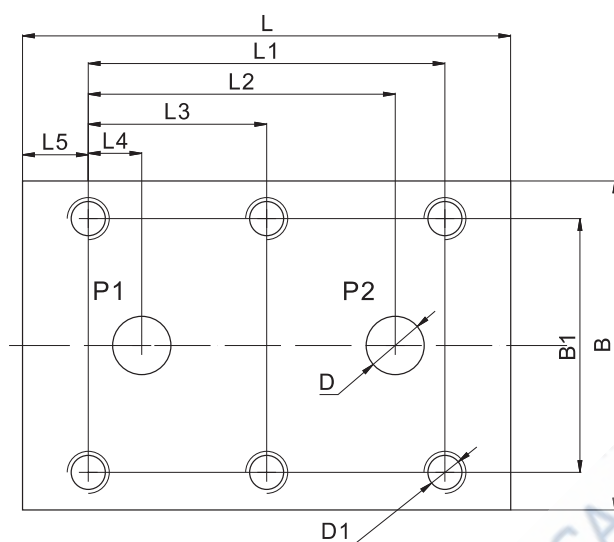


► RVP 安装尺寸 / RVP Installation Dimensions



型号 Model	B	B1	L	L1	L2	L3	L4	L5	D	D1
RVP6	41.5	28.5	41.5	19	17.6	—	1.6	6.4	2-Ø5	4-M6
RVP8	46	33.5	63.5	35	30	—	4.5	14.2	2-Ø7	4-M6
RVP10	51	38	70	33.5	29.5	—	4	18	2-Ø10	4-M6
RVP12	57.5	44.5	80	38	34	—	4	21	2-Ø13	4-M6
RVP16	70	54	104	76	65.4	38	11.4	14	2-Ø17	6-M8
RVP20	76.5	60	127	95	76	47.5	19	16	2-Ø22	6-M8
RVP25	100	76	165	120	100.1	60	20.6	15	2-Ø28.5	6-M10
RVP30	115	92	186	143	118.8	71.5	23.8	15	2-Ø35	6-M12
RVP40	140	111	192	133.5	114.5	67	25.5	16	2-Ø47.5	6-M12

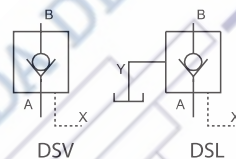
DSV/DSL 型液控单向阀 DSV/DSL PILOT OPERATED CHECK VALVES

DSV/DSL 型液控单向阀只允许油液从正向通过，反向则截止，可用作保压。当接通控制油口 X 时，压力油可反向流动。

DSL 型为泄漏油内部回油；DSL 型为泄漏油外部回油。

DSV/DSL pilot operated check valves allow free flow in one direction and block flow in the counter direction to maintain pressure. The oil is allowed to flow in the counter direction when the X port is connected.

DSV is designed for internally drained, DSL is designed for externally drained.



DSV 10 P A 1 - 30 / 2 V *

V= 泄漏油内部回油

L= 泄漏油外部回油

V=Internally drained (without drain port)

L=Externally drained (with drain port)

通径见31页 See the table below for page 31

P= 板式:只有 10,20,30; G= 管式

P=Subplate mounting(Only for size 10,20,30);

G=Threaded connection

A= 先导式; B= 直动式

A=Pilot type;

B=Direct type

开启压力 Cracking pressure:

1=0.3MPa ; 2=0.5MPa ; 3=0.8MPa

附加说明

For further details

无: 矿物质液压油

V= 磷脂酸液压油

No code=NBR seals for petroleum oils

V=FPM for phosphate ester

无 = 英制;2= 公制

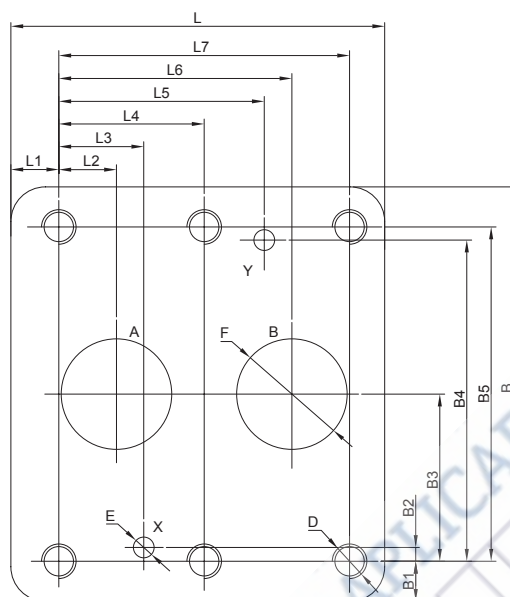
No code=Inch thread; 2=Metric

系列号 Series number

技术参数 Technical data

通径(板式) Size	DSV10	DSL10	DSV20	DSL20	DSV30	DSL30
X口控制容积 Port X, pilot volume(cm³)	2.2		8.7		17.5	
Y口容积 Port Y, volume(cm³)	—	1.9	—	7.7	—	15.8
流动方向 Direction of flow	从A→B正向流通		从B→A阀开启时反向流通		Free flow A to B; B to A when piloted open	
工作压力 Operating pressure	31.5					
控制压力 Pilot control pressure range	0.5—31.5					
最大流量 Max. flow rate (L/min)	80		150		300	

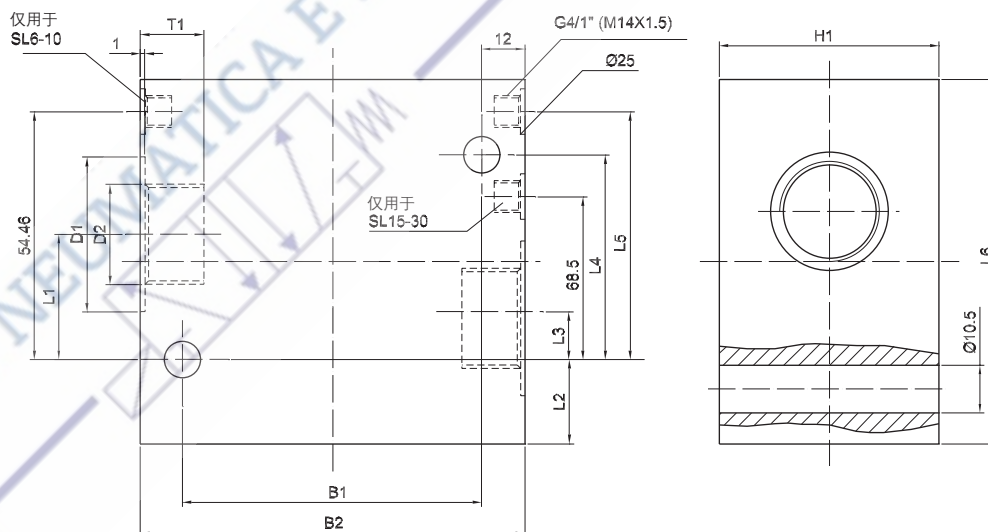
▶ 板式连接尺寸 / Subplate mounting dimensions



技术参考 / Technical data

L1	L2	L3	L4	L5	L6	L7	B	B1	B2	B3	B4	B5	D	E	F
18.5	7.2	21.5	/	21.5	35.8	42.9	85	9.15	7.9	33.35	58.8	66.7	4-M10/24	2-Φ6	2-Φ13
17.5	11.1	20.6	/	39.7	49.2	60.3	102	11.3	6.4	39.7	73	79.4	4-M10/24	2-Φ6	2-Φ25
15.5	16.7	24.6	42.1	59.5	67.5	84.2	120	11.6	3.8	48.4	92.8	96.8	6-M10/24	2-Φ6	2-Φ32

▶ 管式连接尺寸 / Threaded connection dimensions



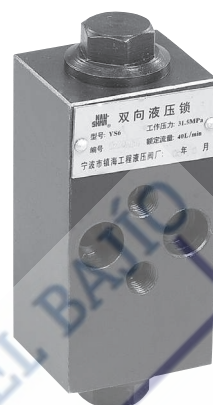
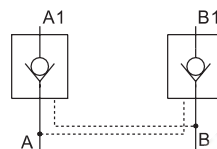
型号	通径	B1	B2	D1	D2	T1	H1	L1	L2	L3	L4	L5	L6
SV	10	66.5	85	34	G 1/2" M22X1.5	14	42	27.5	18.5	10.5	33.5	49	80
	15	79.5	100	42	G 3/4" M27X2	16	57	36.7	17.3	13.3	50.5	67.5	95
	20	79.5	100	47	G1" M33X2	18	57	36.7	17.3	13.3	50.5	67.5	95
	25	97	120	56	G1 1/4" M42X2	20	75	54.5	15.5	20.5	73.5	89.5	115
	30	97	120	61	G1 1/2" M48X2	22	75	54.5	15.5	20.5	73.5	89.5	115
	10	66.5	85	34	G 1/2" M22X1.5	14	42	22.5	18.5	10.5	33.5	49	80
SL	15	79.5	100	42	G 3/4" M27X2	16	57	30.5	17.5	13	50.5	72.5	100
	20	79.5	100	47	G1" M33X2	18	57	30.5	17.5	13	50.5	72.5	100
	25	97	120	56	G1 1/4" M42X2	20	75	54.5	15.5	20.5	84	99.5	125
	30	97	120	61	G1 1/2" M48X2	22	75	54.5	15.5	20.5	84	99.5	125

YS 双向液压锁 YS DOUBLE-DIRECTION HYDRAULIC LOCK

YS型双向液压锁用于关闭两个工作油口。此系列在工作状态下可长时间无泄漏，且保压稳定性好。

YS series double-direction lock is used to close two oil ports for pressure maintaining.

The valve features: long time no leakage, good pressure maintaining.

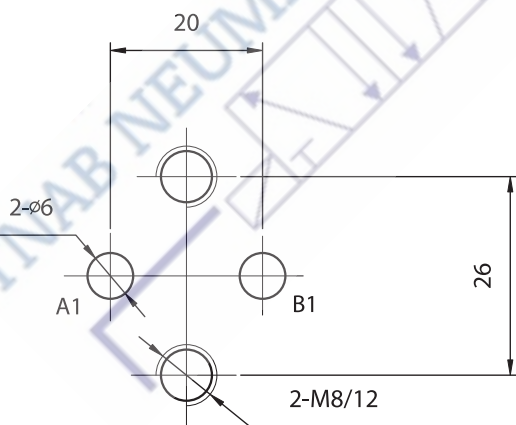


型号 Model	YS S - 6 A	结构形式 Structure form
双向 Double-direction		通径 Size

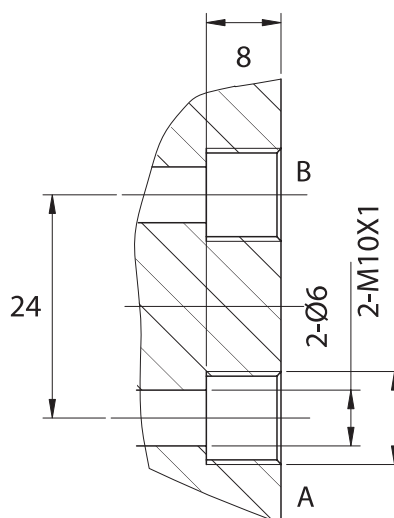
技术参数 Technical data

公称压力 Nominal pressure (MPa)	31.5
额定流量 Flow rate (L/min.)	25

固定底板安装尺寸 / Installation Dimensions



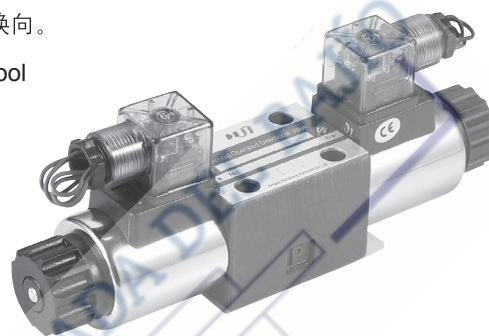
压力油接口 / Oil connection ports



DWG 6 SERIES SOLENOID OPERATED DIRECTIONAL CONTROL VALVES

DWG 6 型方向控制阀是电磁铁操纵的换向阀,用以控制油液的开启,停止和换向。

DWG 6 series directional control valves are solenoid operated directional spool valves, these valves are used to the start, stop and direct flow.



4 DWG 6 E 60 / O AG24 N Z4 / B0.8 V *

3= 三油口

4= 四油口

3=3-way

4=4-way

通径 Size 6

机能符号 Spool type

系列号 Series

$$50=50$$

60=60 螺纹连接电磁铁; Solenoid coils with thread connection

O= 无复位弹簧; OF= 带定位器; 无= 弹簧复位

No code=With spring return

O=Without spring return; OF=Without spring return,with detent

G24= 直流 24V; W220 = 交流 220V; W110= 交流 110V

G24=DC 24V; W220=AC 220V; W110=AC 110V

附加说明
For further details

无:矿物质液压油 V= 磷酸酯液压油
No code=NBR seals for petroleum oils
V=FPM seals for phosphate ester

无 = 无插装节流器
B0.8= 节流孔径 0.8
B10= 节流孔径 1.0; B12= 节流孔径 1.2
No code=Without orifice insert
B08=Orifice size 0.8mm
B10=Orifice size 1.0mm
B12=Orifice size 1.2mm

Z4= 方型插头; J5= 接线盒; Z5L= 带灯大方型插头
Z4=Quadrate plug; J5=Wire box
Z5L=Large quadrate plug with light

N= 有故障检查按钮; 无 = 没有故障检查按钮
No code=Without manual override
N=With manual override

技术参数 / Technical data

规格	Size	6
最大流量	Max. flow rate (L/min.)	60
工作压力	Operating pressure (MPa)	ABP油口 31.5 ABP oil port 31.5
		T油口 16 T oil port 16

机能符号 / Spool symbols

	A		E		EA
	C		F		FB
	D		G		GA
	B		H		HA
	Y		J		JA
	-/O		L		LA
	-/OF		M		MA
	A		P		PA
	C		Q		QA
	D		R		RA
	A		T		TA
	C		U		UA
	D		V		VA
	A		M		I
	C		V		VA
	D		M		I
	A		M		I
	C		V		VA
	D		M		I
	A		M		I
	C		V		VA
	D		M		I
	A		M		I
	C		V		VA
	D		M		I
	A		M		I
	C		V		VA
	D		M		I
	A		M		I
	C		V		VA
	D		M		I
	A		M		I
	C		V		VA
	D		M		I
	A		M		I
	C		V		VA
	D		M		I
	A		M		I
	C		V		VA
	D		M		I
	A		M		I
	C		V		VA
	D		M		I
	A		M		I
	C		V		VA
	D		M		I
	A		M		I
	C		V		VA
	D		M		I
	A		M		I
	C		V		VA
	D		M		I
	A		M		I
	C		V		VA
	D		M		I
	A		M		I
	C		V		VA
	D		M		I
	A		M		I
	C		V		VA
	D		M		I
	A		M		I
	C		V		VA
	D		M		I
	A		M		I
	C		V		VA
	D		M		I
	A		M		I
	C		V		VA
	D		M		I
	A		M		I
	C		V		VA
	D		M		I
	A		M		I
	C		V		VA
	D		M		I
	A		M		I
	C		V		VA
	D		M		I
	A		M		I
	C		V		VA
	D		M		I
	A		M		I
	C		V		VA
	D		M		I
	A		M		I
	C		V		VA
	D		M		I
	A		M		I
	C		V		VA
	D		M		I
	A		M		I
	C		V		VA
	D		M		I
	A		M		I
	C		V		VA
	D		M		I
	A		M		I
	C		V		VA
	D		M		I
	A		M		I
	C		V		VA
	D		M		I
	A				